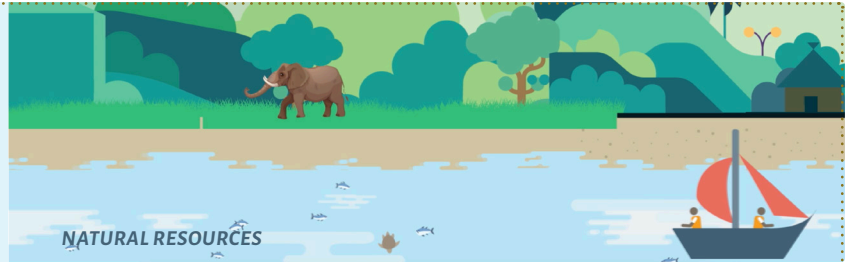


WHY IS IT NECESSARY TO OFFSET THE IMPACTS ON BIODIVERSITY?

BIODIVERSITY & ECOSYSTEM SERVICES

More than 80% of Mozambique's population depend on natural resources for their survival. These ecosystem services provide water, food, firewood, building materials and medicines as well as supporting livelihoods such as agriculture and fisheries.



THREATS & SOLUTIONS

Development projects on land and sea impact the natural environment. Thus there is an urgent need to promote sustainable economic development in harmony with biodiversity conservation. The steps of the Mitigation Hierarchy - avoid, minimize, restore and offset - are designed to help achieve this in accordance with the National Biodiversity Strategic Action Plan 2015-2035 (NBSAP).



WHY BIODIVERSITY OFFSETS?

Where environmental impacts persist after mitigation hierarchy measures have been fully implemented at a project site (area of impact), biodiversity offsets has to implemented at a different site without project influence, however, with similar biodiversity as the one impacted.



WHAT ARE OFFSETS?

A biodiversity offset is a conservation action on the ground outside the project's influence area that seeks to enhance a particular type of biodiversity, generating measurable results that will offset project impacts on the same type of biodiversity.



PHOTOS: Namuli - Jonathan Timberlake, Tofo - Mervyn Lotter. ILLUSTRATIONS: From Hierarquia de mitigação e contrabalanços de biodiversidade film - BIOFUND, WCS & Governo de Moçambique.



LEGAL FRAMEWORK

The design and implementation of biodiversity offsets in Mozambique are governed by Decree 54/2015 and the Directive on Biodiversity Offsets (Ministerial Diploma 55/2022) and should achieve No Net Loss (NNL) or NG (Net Gain) (proportion of losses and gains) depending on the type of biodiversity impacted.

CONTRIBUTION TO NATIONAL TARGETS

Local offsets help achieve conservation outcomes at the national level through safeguarding sites with national and international relevance, such as Conservation Areas (ACs) and Key Biodiversity Areas (KBAs). For example, Namuli, Mabu and Tofo KBAs contribute to achievement of national conservation target 11A.